



CorePro LED PLC 2P



CorePro LED PLC 4.5W 830 2P G24d-1

CorePro LED PLC 2P integrates a LED light source into a traditional fluorescent form factor. This product is the ideal solution for uplampping in general lighting applications: it meets basic lighting requirements, offers significant energy savings, and is environmentally friendly.

Product data

General Information	
Cap-Base	G24d-1
Nominal lifetime	30,000 hour(s)
Switching Cycle	50,000
Lighting Technology	LED
Flux measurement reference	Sphere
Light Technical	
Color Code	830 [CCT of 3000K]
Beam Angle (Nom)	120 degree(s)
Luminous Flux	475 lm
Color Designation	White (WH)
Correlated Color Temperature (Nom)	3000 K
Luminous Efficacy (rated) (Nom)	105.00 lm/W
Color Consistency	<6
Color rendering index (CRI)	83
LLMF At End Of Nominal Lifetime (Nom)	70 %
Photobiological safety according to EN 62471	RG0
Operating and Electrical	
Line Frequency	50 to 60 Hz
Input Frequency	50 to 60 Hz
Power Consumption	4.5 W

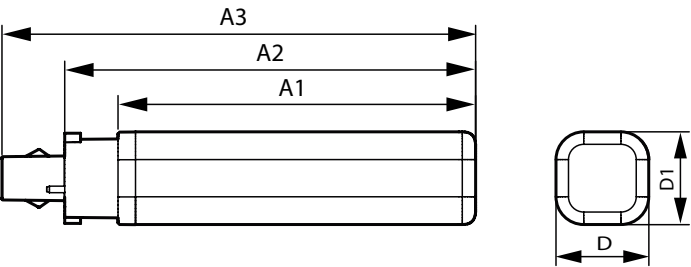
Lamp Current (Max)	25 mA
Lamp Current (Min)	20 mA
Starting Time (Nom)	0.5 s
Warm-up time to 60% light	0.5 s
Power Factor (Fraction)	0.9
Voltage (Nom)	220-240 V
Ballast Compatibility	EM
LED alternative to fluorescent lamp power	13 W
Inrush current at mains	2.5
Max. lamp no. on MCB B type 10A - Mains	191
Max. lamp no. on MCB B type 10A – EM ballast without Compensation Capacitor.	220
Max. lamp no. on MCB B type 10A – EM ballast with Compensation Capacitor.	30
Max. lamp no. on MCB B type 16A - Mains	306
Max. lamp no. on MCB B type 16A – EM ballast without Compensation Capacitor.	330
Max. lamp no. on MCB B type 16A – EM ballast with Compensation Capacitor.	49
Temperature	
T-Case Maximum (Nom)	60 °C

CorePro LED PLC 2P

Controls and Dimming	
Dimmable	No
Mechanical and Housing	
Bulb Material	Plastic
Product Length	115 mm
Bulb Shape	PL-C
Net Weight (Piece)	0.070 kg
Approval and Application	
Energy Efficiency Class	F
Energy Saving Product	Yes
Approval Marks	RoHS compliance
Energy Consumption kWh/1000 h	5 kWh
EPREL Registration Number	403560
CE mark	Yes
EU RoHS compliant	Yes

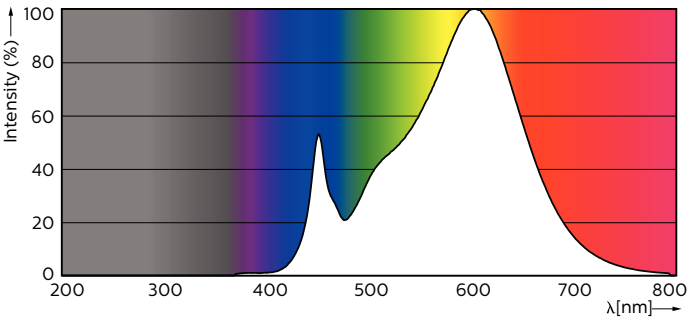
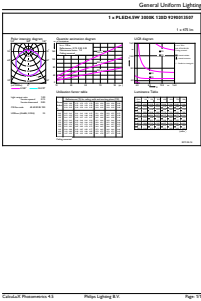
Ambient temperature range	-20 °C to 35 °C
Product Data	
Order product name	CorePro LED PLC 4.5W 830 2P G24d-1
Full product name	CorePro LED PLC 4.5W 830 2P G24d-1
Full product code	871869670659600
Order code	929001350702
Material Nr. (12NC)	929001350702
Numerator - Quantity Per Pack	1
EAN/UPC - Product/Case	8718696706596
Numerator - Packs per outer box	10
EAN/UPC - Case	8718696706602

Dimensional drawing



Product	D1	D	A1	A2	A3
CorePro LED PLC 4.5W 830 2P G24d-1	34 mm	34 mm	95 mm	115 mm	138 mm

Photometric data

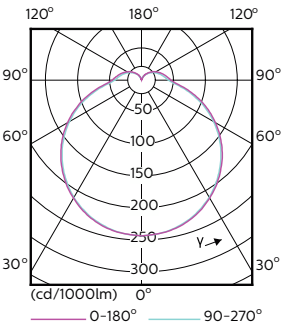


General uniform lighting - CorePro LED PLC 4.5W 830 2P G24d-1

Spectral Power Distribution Colour - CorePro LED PLC 4.5W 830 2P G24d-1

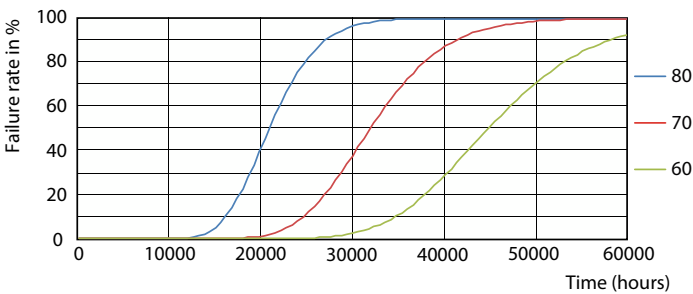
CorePro LED PLC 2P

Photometric data

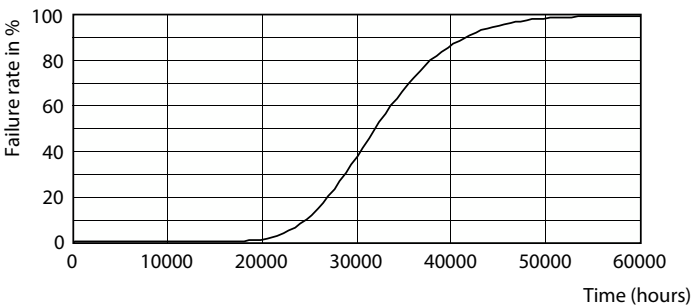


Light Distribution Diagram - CorePro LED PLC 4.5W 830 2P G24d-1

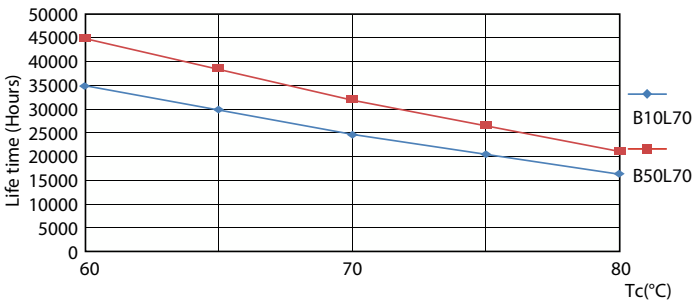
Lifetime



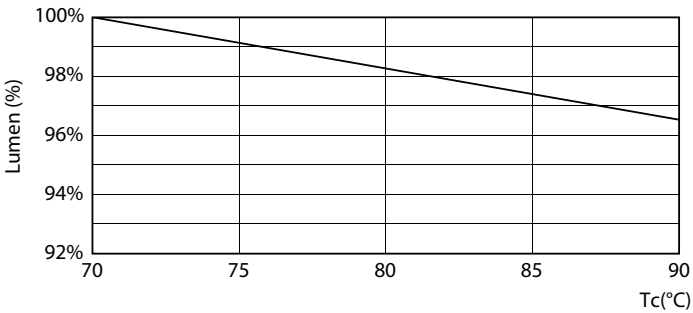
FailureRate



Life Expectancy Diagram



LifetimeVsTc



Lumen Maintenance Diagram - CorePro LED PLC 4.5W 830 2P G24d-1

CorePro LED PLC 2P

Lifetime



Lumen Maintenance Diagram - CorePro LED PLC 4.5W 830 2P G24d-1

